

UNITED STATES  
SECURITIES AND EXCHANGE COMMISSION  
Washington, D.C. 20549

FORM 8-K

CURRENT REPORT  
Pursuant to Section 13 OR 15(d) of The Securities Exchange Act of 1934

Date of Report (Date of earliest event reported): June 4, 2019

INPIXON

(Exact name of registrant as specified in its charter)

Nevada

(State or other jurisdiction  
of incorporation)

001-36404

(Commission File Number)

88-0434915

(I.R.S. Employer  
Identification No.)

2479 E. Bayshore Road, Suite 195  
Palo Alto, CA

(Address of principal executive offices)

94303

(Zip Code)

Registrant's telephone number, including area code: (408) 702-2167

N/A

(Former name or former address, if changed since last report)

Check the appropriate box below if the Form 8-K is intended to simultaneously satisfy the filing obligation of the Registrant under any of the following provisions:

- Written communications pursuant to Rule 425 under the Securities Act (17 CFR 230.425)
- Soliciting material pursuant to Rule 14a-12 under the Exchange Act (17 CFR 240.14a-12)
- Pre-commencement communications pursuant to Rule 14d-2(b) under the Exchange Act (17 CFR 240.14d-2(b))
- Pre-commencement communications pursuant to Rule 13e-4(c) under the Exchange Act (17 CFR 240.13e-4(c))

Indicate by check mark whether the registrant is an emerging growth company as defined in as defined in Rule 405 of the Securities Act of 1933 (§230.405 of this chapter) or Rule 12b-2 of the Securities Exchange Act of 1934 (§240.12b-2 of this chapter).

Emerging growth company

If an emerging growth company, indicate by check mark if the registrant has elected not to use the extended transition period for complying with any new or revised financial accounting standards provided pursuant to Section 13(a) of the Exchange Act.

Securities registered pursuant to Section 12(b) of the Act:

Title of Each Class	Trading Symbol(s)	Name of Each Exchange on Which Registered
Common Stock	INPX	The Nasdaq Capital Market

**Item 7.01 Regulation FD Disclosure.**

The slide presentation attached hereto as Exhibit 99.1 (the “Investor Presentation”) will be presented by Inpixon (the “Company”) at the 5<sup>th</sup> Annual LD Micro Invitational on June 4, 2019. The Company may also present and/or distribute the Investor Presentation to the investment community or utilize it at various industry and other conferences.

By filing this Current Report on Form 8-K and furnishing the information contained herein, the Company makes no admission as to the materiality of any information in this report that is required to be disclosed solely by reason of Regulation FD.

The information contained in the Investor Presentation is summary information that is intended to be considered in the context of the Company’s Securities and Exchange Commission (“SEC”) filings and other public announcements that the Company may make, by press release or otherwise, from time to time. The Company undertakes no duty or obligation to publicly update or revise the information contained in this Current Report on Form 8-K, although it may do so from time to time as its management believes is warranted. Any such updating may be made through the filing of other reports or documents with the SEC, through press releases or through other public disclosure.

The information presented in Item 7.01 of this Current Report on Form 8-K and Exhibit 99.1 shall not be deemed to be “filed” for purposes of Section 18 of the Securities Exchange Act of 1934, as amended (the “Exchange Act”), or otherwise subject to the liabilities of that section, unless the Company specifically states that the information is to be considered “filed” under the Exchange Act or specifically incorporates it by reference into a filing under the Securities Act of 1933, as amended, or the Exchange Act.

**Item 9.01 Financial Statements and Exhibits.**

(d) Exhibits

<b>Exhibit No.</b>	<b>Description</b>
99.1	<a href="#">Investor Presentation.</a>

**SIGNATURE**

Pursuant to the requirements of the Securities Exchange Act of 1934, the registrant has duly caused this report to be signed on its behalf by the undersigned hereunto duly authorized.

Date: June 4, 2019

**INPIXON**

By: /s/ Nadir Ali  
Name: Nadir Ali  
Title: Chief Executive Officer

EXHIBIT INDEX

Exhibit No.	Description
99.1	<a href="#">Investor Presentation (1)</a>

(1) Furnished herewith.



**inpixon**

INDOOR  
POSITIONING  
ANALYTICS

June 4, 2019

SOUMYA DAS  
COO

---

# SAFE HARBOR STATEMENT



- **Safe Harbor Statement under the Private Securities Litigation Act**
- This presentation includes forward-looking statements within the meaning of the safe harbor provisions of the United States Private Securities Litigation Reform Act of 1995. These forward-looking statements are based on current expectations only, and are subject to a number of assumptions, risks and uncertainties, many of which are beyond our control. Actual events and results may differ materially from those anticipated, estimated, projected or implied by us if one or more of these risks or uncertainties materialize, or if our underlying assumptions prove incorrect. Factors that could affect actual results include but are not limited to product demand and market acceptance, the effect of economic conditions, the impact of competitive products and pricing, governmental regulations, results of litigation, problems with technology, and/or other factors outside the control of Inpixon, Inc. and its subsidiaries (the "Company").
- The forward-looking statements included in this presentation are based on our current expectations, estimates and projections, and the underlying assumptions thereof, about the Company's operations, industry, financial condition and liquidity, as of the date hereof. Statements containing words such as "expect", "believe", "should", "anticipate", "intend", "plan", "may", "will", or similar expressions constitute forward-looking expressions. These forward-looking statements include, but are not limited to, statements about our proposed acquisitions, our anticipated cash flow balances, the future of the Internet Services market, our projected user base, our planned services and marketing initiatives, our ability to compete successfully in our industry, projected operating expenses, projected operating efficiencies, revenues, and capital requirements, and our projected cash position.
- Such statements are not guarantees of future performance and are subject to risks, uncertainties and assumptions that are difficult to predict. Therefore our actual results could differ materially and adversely from those expressed in any forward-looking statements. The Company undertakes no obligation to publicly update any forward-looking statement, whether as a result of new information, future events or otherwise. Statements in this presentation, including factors that we believe may impact our results, are not intended to be exclusive. Additional factors that could cause results to differ materially from those described in the forward-looking statements can be found in the Company's Annual Report on Form 10-K and other filings with the Securities and Exchange Commission (SEC) available at the SEC's Internet site ([www.sec.gov](http://www.sec.gov)).

6 % of their time outdoors is in their cars

## OUTDOORS



### GPS WORKS UNDER OPEN SKY

The navigating blue dot is ineffective in the indoors



### IN & OUTDOORS ASSIMILATION

The trusted blue dot needs to work in all places and premises seamlessly



### NO LEADER IN INDOOR POSITIONING

The market has few >\$5M vendors with complementary technologies



### \$40B MARKET SIZE BY 2022\*

We have the makings of a billion dollar business and the time is now

## INDOORS

People spend 87% of their time indoors

[\*Source: Markets & Markets]

# INPIXON IS REDEFINING THE INDOORS



## Indoor Positioning

- Capture 100% of the Devices
  - Wireless
  - Wi-Fi
  - Bluetooth
  - 100% Anonymity



## Data Analytics & Intelligence

- Designed for real-time analytics
  - Blockchain technology
  - Artificial Intelligence
  - Voice User Interface
  - Adaptive API
  - Intelligence and Security efficacy



INDOOR POSITIONING ANALYTICS

# INPIXON SOLUTION MATRIX



 GPS	 AWS	 AWS	 AWS ON-PREM	 GPS	 AWS	 ON-PREM
 GPS	 WIFI	 POD	 4000			
 RANGE Global	 <150m	 <30m	 <10m			
 ACCURACY 5-20m	 5-15m	 1-3m	 <50cm			
 PEOPLE  ASSET	 DEVICE DEVICE +APP	 DEVICE DEVICE +APP BLE	 DEVICE DEVICE +APP BLE TAG RFID UWB	 TRACKING	 ANALYTICS	 MONITORING

INDOOR POSITIONING ANALYTICS

# DOING GOOD WITH INDOOR DATA



INDOOR POSITIONING ANALYTICS

# INPIXON IPA IS NEEDED EVERYWHERE



**inpixon**

© 2019 Copyright Inpixon | All Rights Reserved

7

# DELIVER A COMPREHENSIVE IPA SOLUTION PORTFOLIO

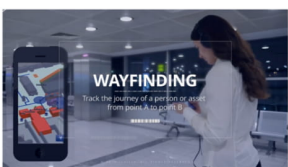
**Security Dome**



**SECURITY DOME**

Create a security dome by detecting all mobile devices, alerting about untrusted devices, and tracking tracked assets.

**Wayfinding**



**WAYFINDING**

Track the journey of a person or asset from point A to point B.

**Video Surveillance**

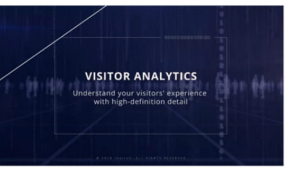


**Locality Systems**  
An Inpixon Company

**VIDEO SURVEILLANCE**

Integrate Radio Frequency (RF) cameras with video surveillance, entity management, and physical access control.

**Visitor Analytics**



**VISITOR ANALYTICS**

Understand your visitors' experience with high-definition detail.


**Marketing Attribution**



**MARKETING ATTRIBUTION**

Attribute a closed loop by noting a prospect or customer's marketing when an individual visits the location.

**AppSDK**



**AppSDK**

Build a location-based app platform for software development kit (SDK).

INDOOR POSITIONING ANALYTICS

## INPIXON IPA IN SCHOOL SAFETY

- Detect and monitor all Wi-Fi, Bluetooth, UWB and cellular devices and equipment on a live floorplan in real-time
- Provide location accuracy at sub-room level
- Color-code “UWB tags” and “trusted” vs. “untrusted” devices for easy identification
- Rewind and play back events with IPA DVR function
- Establish “no-phone/no-device” areas and receive alerts when policy is breached (testing areas)
- Prevent security breaches and IP loss from rogue devices and access points
- Augment traditional security policies with location-based intelligence
- Integrate with school video surveillance, access control, and communications systems as part of an overall security management solution, providing critical locational context during normal and emergency conditions



© 2019 Copyright Inpixon | All Rights Reserved

## INPIXON IPA STRENGTHENING BANK BRANCHES

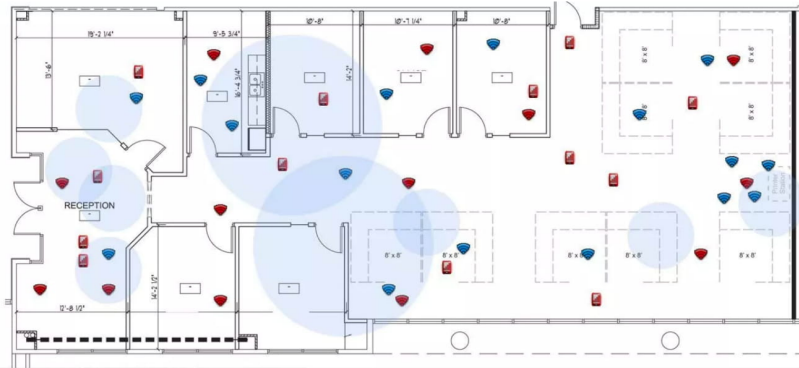
- Understand how customers use the branch; where they go, how long they stay, what services they use.
- Continuously validate the design, layout, staffing mix and technology use within the branch to ensure optimum levels based on customer interactions and journey
- Continuous operation for deeper, more detailed customer understanding
- True customer location (not merely proximity or position)
- 100% visitors detection by mobile device, not just a Wi-Fi-enabled devices
- Distinguish between employees, visitors, and transient foot traffic
- Understand how building layout changes affect foot traffic
- Improve security and safety with real-time monitoring



## INPIXON IPA PROTECTING ENTERPRISE BUILDINGS

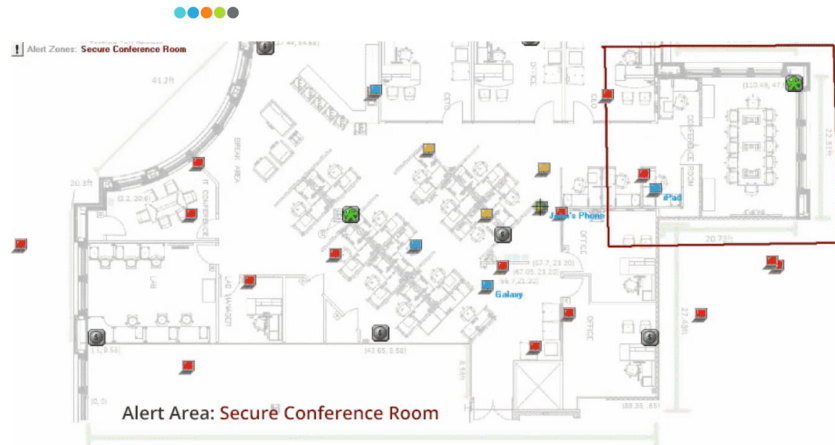


- Detect, locate, and monitor all cellular, Wi-Fi, and Bluetooth assets, equipment and personnel devices on a live floor plan in real time
- Provide location accuracy down to sub-room level
- Alert in real time via security dashboard
- Color-code “known” vs. “unknown” devices for easy identification
- Connect to 3rd party systems, create zone-based security, document access policies, augment existing safety and security systems
- Rewind and play back events with DVR function for security forensics
- Provide detailed insights into usage, flow, relationships, and more between personnel, assets, and visitors with Inpixon analytics



## INPIXON IPA SECURING GOVERNMENT AGENCIES

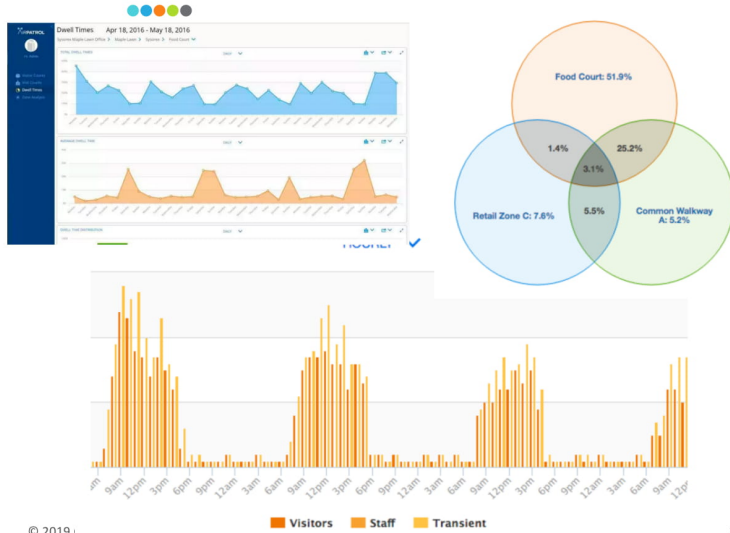
- Improve both physical and cyber security with total situational awareness of all cellular, Wi-Fi and Bluetooth devices in an area
- Distinguish between known and rogue devices
- Receive real time alerting to enforce "no phone / no device" zones
- Prevent security breaches and IP loss from devices that bypass traditional data security controls
- Augment traditional security policies with location-based controls





## INPIXON IPA ENHANCING RETAIL EXPERIENCE

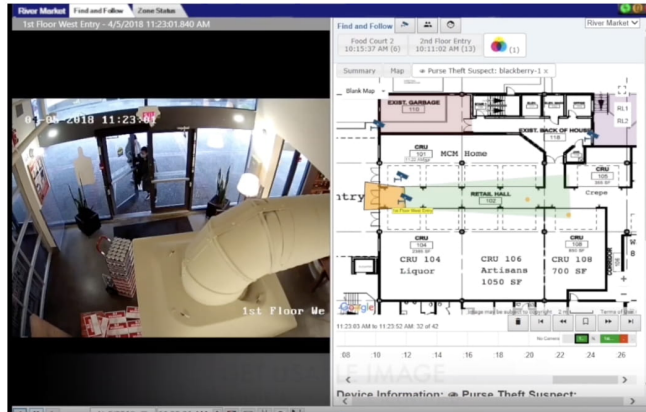
- Real-time, 24/7 continuous operation for deeper, more detailed data collection
- True customer location (not merely proximity or position) accurate within 3-5 meters in motion
- Detects 100% of shoppers with a cellular phone or mobile device, not merely the percentage with a Wi-Fi-enabled device
- Industry's most accurate visitor footfall counts without duplication, time gaps or miscounting of "non-people"
- Distinguish between employees, visitors, transient foot traffic, mega-dwellers and residents
- 100% passive and private – "listen-only" technology does not collect personally identifiable information or interfere with wireless networks or devices



IPA VIDEO REVEALS WHAT IS OBSCURE TO VIDEO SURVEILLANCE CAMERA



- Protect your premises by augmenting video images with RF device detection
- Save time and resource to identify suspects for law enforcement
- Improve customer service and customer engagement with sales associates
- Visitors analytics augmented by video based visitor data



- Support a **\$68B** Video Surveillance market
- Organized Retail Crime - **\$30B**
- Casino Survey - **\$12B**

# INPIXON IPA ON GARTNER MAGIC QUADRANT



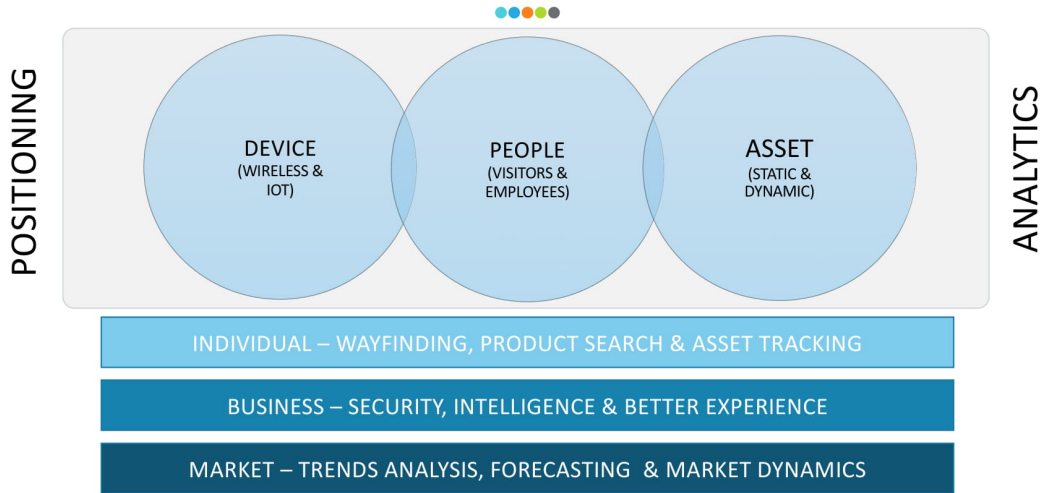
"This vendor should be shortlisted for any retail, public-sector and security device detection scenarios."

Source: Gartner, Magic Quadrant for Indoor Location Services, Worldwide, by Tim Zimmerman, Annette Zimmermann, January 28, 2019.

According to the report, the indoor positioning market is poised for growth. The report states, "By 2022, 65% of enterprises will require indoor location asset tracking (both people and equipment) to be part of all access layer infrastructure communication decisions (up from less than 10% today)."



# COLLECTING COMPREHENSIVE INDOOR DATA



# STRENGTHENING INDOOR DATA IN 2019



## INPIXON INDOOR POSITIONING ANALYTICS

Capture 100% of active devices (Cell, Wi-Fi, BT, RFID, UWB) + Artificial Intelligence + Big Data Integration + Adaptive API + GDPR Compliant



DEVICE  
(WIRELESS &  
IOT)

PEOPLE  
(VISITORS &  
EMPLOYEES)

ASSET  
(STATIC &  
DYNAMIC)



### APP / SDK

**Universal IPA device code platform** + Real-time content + Social Media link + User defined consent



### ACCESS POINT BASED WIFI

**Third Party Access Points** + Wi-Fi Location + Data + Existing Infrastructure + Next Gen WiFi + Installed Customer Base + Upsell to Inpixon IPA



### MAPS

**Combined Indoor & Outdoor map** + Dynamic interface + Wayfinding + Layered Utility profiles

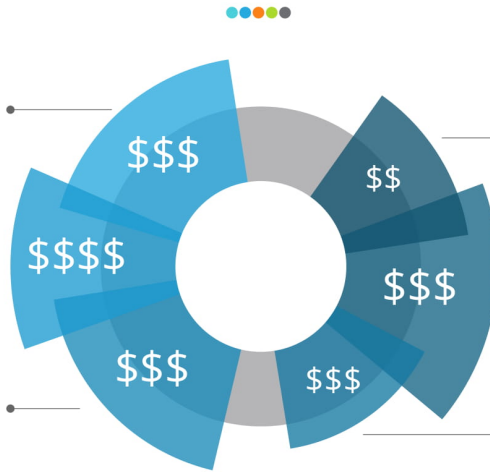
### GPS

**Multi band tags for people and assets** +  
Outdoor GPS tracking +  
Indoor tracking +  
Seamless transition from outside to inside and vice versa +  
Analytics + AI +  
Homogenized interface

# DATA MONETIZATION

## WE MAKE MONEY

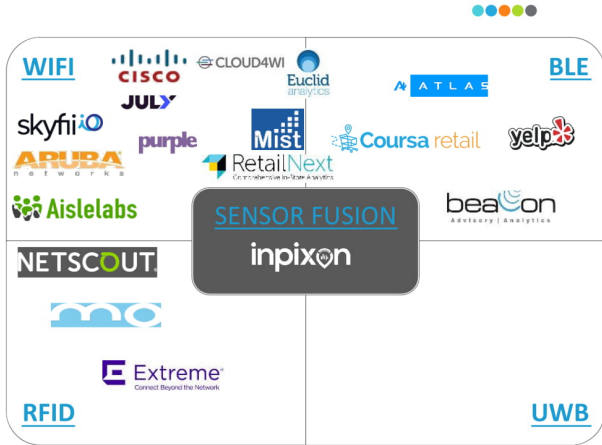
- Location Big Data**  
External monetization of visitor and venue data
- Location Advertising**  
Enable promotional and loyalty programs
- Location Analytics**  
Internal and Brand tenant performance optimization



## THEY SAVE MONEY

- Resource Allocation**  
Gain operational intelligence and trend analysis
- Reduce Risk**  
Use device reputation and device fingerprinting to prevent theft and fraud
- Evaluate Programs**  
Verify profitability of promotional events with accurate data

# INDOOR POSITIONING WiFi MARKET CONSOLIDATION



More than \$350M invested in this market thus far:

- Cisco acquired July Systems, Oct 2018
- Yelp acquired Turnstyle 2017
- WeWork acquired Euclid Feb 2019

# INPIXON LEADERSHIP TEAM



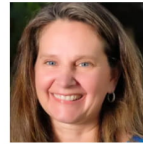
**Nadir Ali**  
Chief Executive Officer

- Oversee strategy direction and operations of the company
- Prior experience: Tira Capital; Isadra; Deloitte Consulting
- BA, University of California, Berkeley



**Soumya Das**  
Chief Operating Officer

- Leads sales, marketing, channel and engineering
- Prior experience: Identiv; SecureAuth; Oracle; Opentext
- MBA, UK; BBM, Andhra University, India



**Wendy Loudermon**  
Vice President of Finance

- Oversees the financial and administrative units
- Prior experience: Sysorex Government
- BS in Accounting and MS in Taxation from George Mason University



**Adam Benson**  
Chief Technology Officer

- Leads software and hardware engineering
- Prior experience: Cadillac Fairview Corporation; VMG Strategic Consulting; AME Supply



**Shirish Tangirala**  
Chief Product Officer

- Leads product management and customer service
- Prior experience: NCGS and Global Medical Informatics
- BE in Civil Engineering majoring in Computer Applications, India



**David Westgate**  
Executive Vice President of IT Operations

- Oversees the cloud infrastructure, and corporate networks,
- Prior experience: U.S. Air Force, McBride and Associates





# INVEST WITH US

INDOOR POSITIONING ANALYTICS

WE ARE CYBERNATING INDOOR DESTINATIONS  
BY CONNECTING THE PHYSICAL AND DIGITAL  
WORLDS



## PATENTED TECHNOLOGY

Capture anonymous visitor  
data from any mobile device



## IoT HUB

Provide location and user  
context to all future IoT apps



## DATA SUBSCRIPTION

Continue to collect richer data  
and offer better intelligence

inpixon



# Appendix



<http://www.marketsandmarkets.com/Market-Reports/proximity-marketing-market-110584904.html>

<http://www.marketsandmarkets.com/Market-Reports/smart-factory-market-1227.html>

<http://www.marketsandmarkets.com/Market-Reports/smart-hospitality-market-93242156.html>

<http://www.marketsandmarkets.com/Market-Reports/smart-digital-education-market-571.html>